

U3/S - Mini Remote Head



- Smooth & Quiet Operation**
- Extremely Slow and Fast speeds**
- Instantly Responsive**
- BE_HD10 Camera control**
- Zoom & Focus Control**
- Preset Positions**
- Radio Data Control option**

The **U3/S** Mini Remote Head is a development of our extremely popular **U3** Head. It is small and fully featured for both live action moves and preset positions together with full camera and lens control using RS485 data. The head is weatherproof and can be used externally without further protection.

The **U3/S** is now fully upgraded being extremely quiet, even smoother and with a precisely controllable speed range of 90deg/sec to 0.01deg/sec or less. This gives smooth moves even with 40x lenses. The preset positions are achieved more quickly and with greater accuracy.

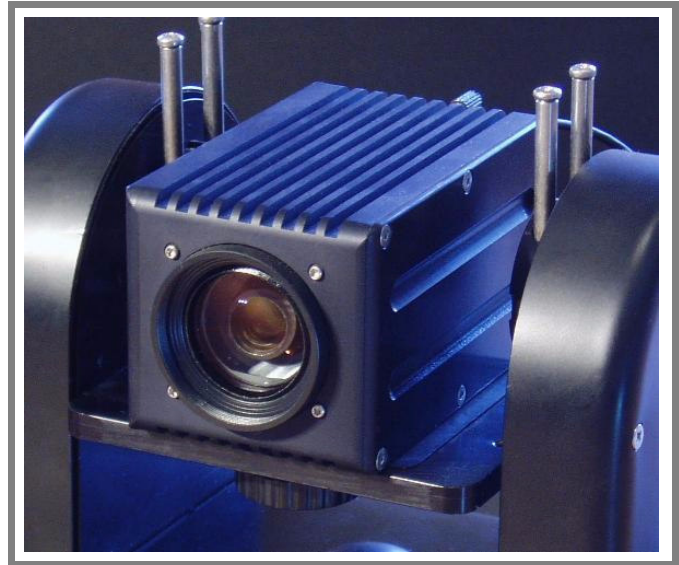
The unit now supports our **BE_HD10** multi standard **Mini HD Camera** and offers a built-in PSU, plus engineering control of the camera via the same data path. This makes cabling extremely simple, using just a single 4-core XLR cable for both power and data.

If required, 2 independent frequency data receivers can be included for wireless operation. These utilise our Data Transmitters which are also very easy to rig and use.

Inverted or even side mounting (for vertical shots) presents no problems for the head as the camera is centre-of-gravity balanced in both axis. Pan and Tilt clutches are fitted to protect the mechanics and for easy rigging.

As standard the **U3/S** can store 8 preset positions of pan, tilt, zoom and focus. Pan and tilt positions are accurate to within 0.4deg. Alternative positioning commands can be implemented for individual customer requirements.

Up to 10 cameras and heads can be connected in a 'daisy chain' manner to a controller. Alternatively up to 64 heads can be controlled using a distribution amplifier or via a radio data link provided this allows 'streaming' of the data. The **U3/S** does all the data and error handling internally and is optimised for live action control. Each head recognises its own ident, therefore the same frequency can be used for all heads.



U3/S with the BE_HD10 Mini HD Camera

Dimensions: Height 165mm, Width 165mm, Depth 95mm Weight 1.6kg

