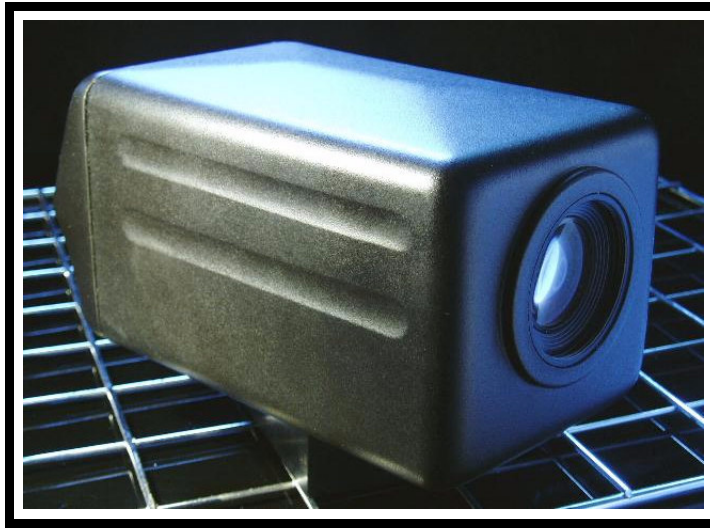
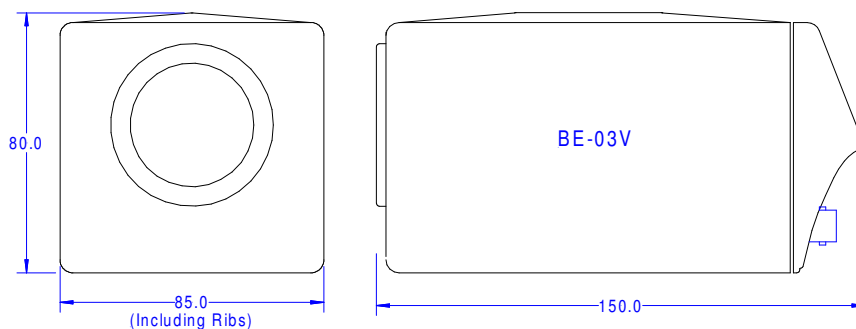


BE-03V 3-chip Remote Camera



Weatherproof (O-ring sealed)
Shrouded Sockets
Fully Software Controlled
570 line horizontal resolution
True 16:9 switchable (16:9 chip)
12:1 Optical Zoom (+4 x digital)
Outputs: Y/C, R/G/B/Sync, VBS
SDI output option (10 bit)
14 bit Digital Processing
Weight: 0.5kg
Available in **any** colour
Genlock option (October 2004)



BE-03V - Technical Specifications

Image Sensor: 3 x 1/4.7" Advanced HAD CCDs
Picture Elements: 1,070,000 pixels (Approx 1208 x 882)

Min. Illumination: 1.0lux @ 1/3 sec
Recommended: 100 - 100,000 lux
S/N Ratio: >50dB @ 0dB

Gain: -3dB - +18dB in 3dB steps
Shutter Speed: 1/3 - 1/10,000 Sec

White Balance: 3200K
5600K
Auto Tracing
One Push Set
Manual (R-Gain, B-Gain)

Lens: Iris: F1.6 - F28 in 1/2 stop steps
Zoom 4:3 38 degrees - 3.3 degrees
Zoom 16:9 45 degrees - 4 degrees
MOD: 800mm
Adapter: 37mm front ring

Automatic/Manual Functions;
Auto Iris
Auto Focus
Auto White Balance

Outputs; Composite Video - BNC
R, G, B, Sync - 15 way D plug
Y, C - 15 way D plug

SDI Output Option: 10 bit - 270Mbit - BNC

Genlock Option: Frame sync. (available October 2004)

Power: 12v DC @ 0.6A
12v DC @ 1.0A with SDI output

Operating Temp. 0 - 45 deg.C